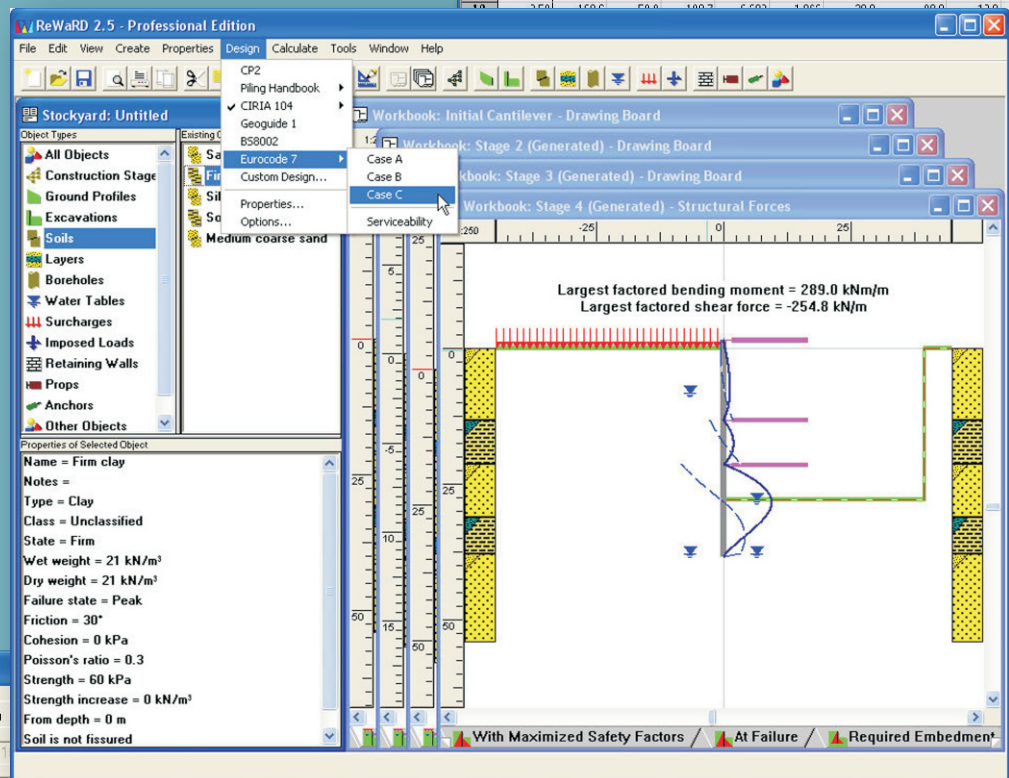
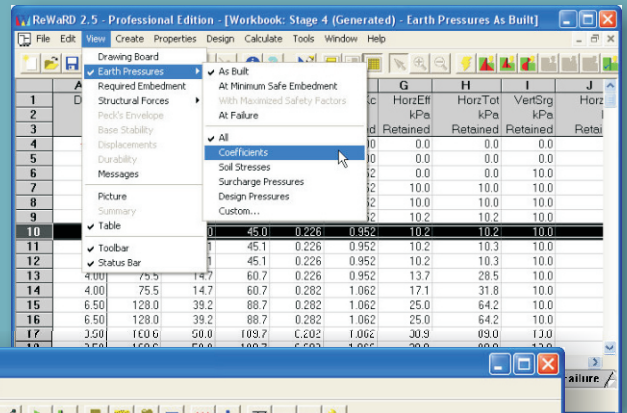
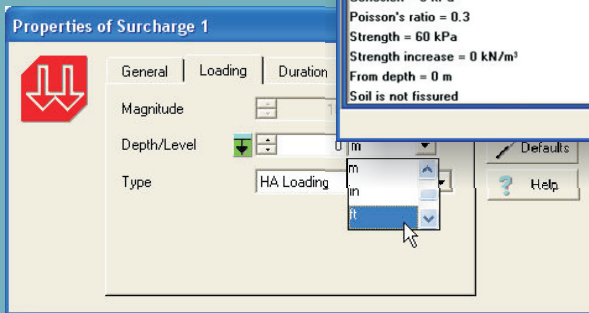


# ReWaRD

ReWaRD is one of the leading programs for the design of embedded retaining walls, incorporating several UK and international design standards including BS8002 and Eurocode 7. Designed by engineers for engineers, it draws upon the technical expertise of Geocentrix and the practical experience of Corus to produce the most powerful and user-friendly set of tools for retaining wall design.

ReWaRD increases your productivity in next to no time. Save hours a week by simplifying the design process and reducing calculation times. Run multiple what-if scenarios to fine tune your design. Let the program guide you through the labyrinth of clauses in international design standards.



ReWaRD is supplied with a detailed User Manual, including three step-by-step tutorials. A separate Reference Manual explains the background theory and assumptions behind ReWaRD.

Technical support for ReWaRD is provided free-of-charge for 30 days and thereafter via an annual support agreement. Program updates are placed on the Geocentrix website ([www.geocentrix.co.uk/support](http://www.geocentrix.co.uk/support)) at regular intervals.

ReWaRD re-defines the meaning of ease-of-use, while giving the engineer more time to create the best possible designs. ReWaRD gives you the ability to design a wide range of concrete and steel structures, making it a flexible and comprehensive tool.



Geocentrix, Scenic House, 54 Wilmot Way, Banstead, Surrey, SM7 2PY, UK

©Geocentrix and ReWaRD are registered trademarks of Geocentrix Ltd.  
ReWaRD ©1992-2007 Geocentrix Ltd. All rights reserved. Program commissioned by Corus

# REWARD 2.5 SPECIFICATION

## INTEGRATED DESIGN ENVIRONMENT

### STOCKYARD

- Multi-paned window lists engineering objects, object types, and object properties
- Create, edit, and delete objects at the click of a button
- Context-sensitive pop-up menus provide direct access to relevant commands
- Cut, copy, and paste engineering objects to and from the clipboard
- Duplicate objects to speed up data entry

### WORKBOOK

- Multi-paged window controls settings for individual construction stages
- Drawing board gives fully-graphical display of retaining wall problem
- Tabs provide fast access to calculation pages
- Draggable horizontal/vertical rulers
- 9 different engineering scales
- Spreadsheet-like display of calculated results
- Context-sensitive pop-up menus allow customisation of each spreadsheet
- Spreadsheet columns can be formatted, re-sized, and/or hidden

### PRINTING

- Full range of printers supported
- Select which pages to use
- Full or summary project information displayed on every page
- Print Preview capability

## GEOTECHNICAL CAPABILITIES

### DESIGN STANDARDS IMPLEMENTED

- British Standard 8002
- Eurocode 7
- CIRIA 104
- Hong Kong Geoguide1
- CP2
- Corus Piling handbook

### SPECIAL FEATURES

- Soil classification System based on BS5930, DIN 18196, and ASTM D2487-1069
- Extensive database of soil properties for over 250 soil types
- Database of sections for Larssen and Frodingham sheet piles (including new LX range)
- Special analysis for King Post walls
- Elastic, hybrid-elastic, wedge, Terzaghi's, and Krey's surcharge calculation methods
- Extensive help system

### ENGINEERING OBJECTS

- Horizontal, Rising, Falling, and Stepped ground profiles
- Horizontal, Rising, Falling, and Berm excavations
- Gravel, Sand, Granular Silt, Cohesive Silt, Clay, Organic, Granular Fill, Cohesive Fill, Chalk, Rock, River Soils, and Custom soils
- Drained and Undrained layers/filled ground
- Hydrostatic, Constant, Hydrodynamic, Linear Seepage, Inverted, Dry, Standing, and Tidal water tables

## DOCUMENTATION AND SUPPORT

### USER MANUAL

- 100+ page printed User Manual
- 100+ page printed Reference Manual
- User and Reference Manuals provided in Adobe Acrobat format

### SUPPLIED EXAMPLES

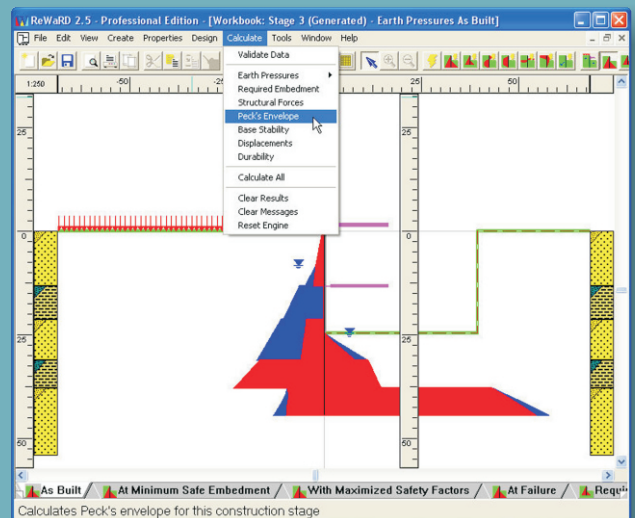
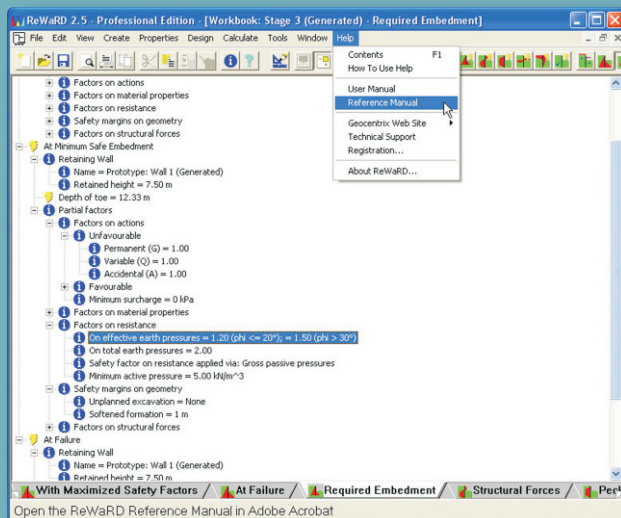
- CIRIA 104 Examples B1-4 & C1-4
- CIRIA SP95 Examples 1 & 3
- Multi-propped wall
- Top-down construction

### TECHNICAL SUPPORT

- Telephone/fax support for registered customers
- Support via e-mail
- Free maintenance releases
- Technical support available on a per-incident or annual contract basis

### SYSTEM REQUIREMENTS

- IBM®-compatible PC
- Pentium (or higher) processor
- Microsoft® Windows® 2000/XP/Vista
- 30Mb free space on hard disk
- Adobe Acrobat 4 or later (Acrobat Reader 8 supplied on CD)
- CD-ROM drive
- Any printer supported by Windows
- Mouse or similar pointing device
- Internet access (optional)



Website: [www.geocentrix.co.uk](http://www.geocentrix.co.uk)

Email: [sales@geocentrix.co.uk](mailto:sales@geocentrix.co.uk)

®Registered trademarks of their respective owners. This brochure is for information only and is subject to change without notice. Geocentrix makes no warranties, express or implied, as to the suitability of ReWaRD for a particular task.