

How to install Repute 1.0



Geocentrix Ltd

Scenic House
54 Wilmot Way
Banstead
Surrey
SM7 2PY
United Kingdom

www.geocentrix.co.uk
mail@geocentrix.co.uk
Tel: +44 (0)1737 373963
Fax: +44 (0)1737 373980


Managing Director
Andrew Bond
MA MSc PhD DIC MICE CEng
andrew.bond@
geocentrix.co.uk

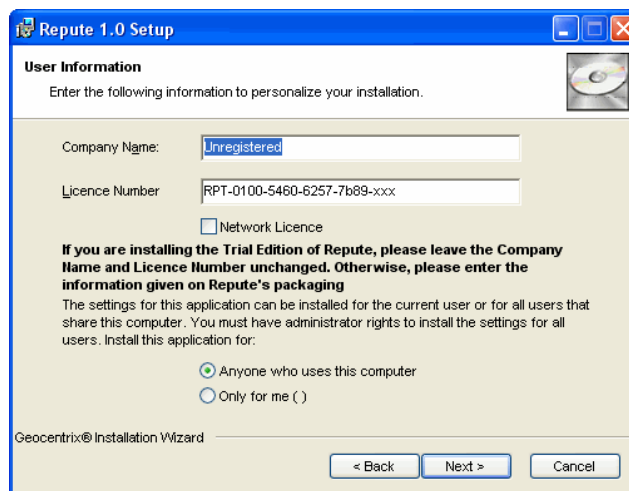
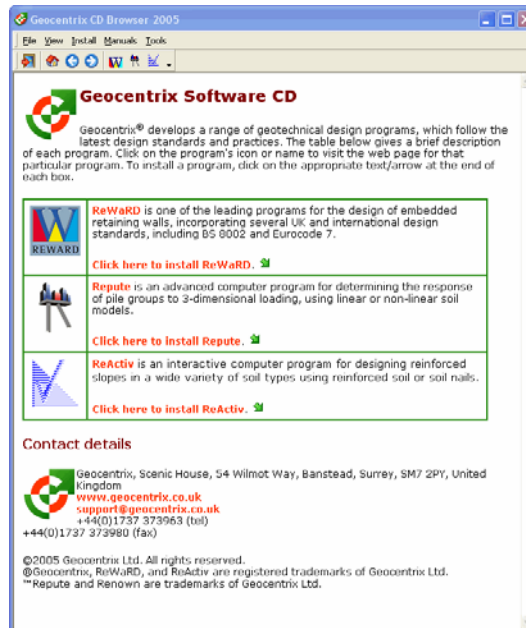
Registered office
as above

Registered in England
No. 3738829

VAT Registration No
GB 709 3785 07

Geocentrix is a registered
trademark of Geocentrix Ltd

1. Remove any previous installation of Repute via Windows' Control Panel.
2. Place the Geocentrix Software CD in your CD-ROM drive. The Browser (right) should automatically appear (if not, run **SETUP.EXE** from the CD's root folder).
3. Click on the text "**Click here to install Repute**" or the arrow  alongside it to run the Repute installation program.
4. When asked "Do you want to run or save this file?" click **Run**. If a security warning appears, click **Run**.
5. Follow the instructions on the welcome screen and then click **Next**.
6. Accept the license agreement and click **Next**.
7. Enter your user information exactly as given on the program's packaging and click **Next**.
8. Select a destination folder and click **Next**.
9. Select an installation type and click **Next**.
10. Click **Next** to install the application.
11. When the device driver installation (HDD_install) starts, please allow several minutes for it to complete. Then click **Close**.
12. When you are told that Repute has been successfully installed, click **Finish**.
13. Click **Exit** to close the Geocentrix CD Browser.
14. To run Repute, first connect the supplied key to your computer's USB/parallel port and then click **Start > All Programs > Geocentrix > Repute 1.0**.



To learn how to use the program, we suggest you follow Tutorials 1-3 in the program's *User Manual* (available in Adobe PDF format from **Start > All Programs > Geocentrix > User Manuals > Repute 1.0 User Manual**).